



ADULT 2024 FALL COURSE CATALOG

Career Technical Education

Whether you are thinking about retraining, progressing in your current career, or shifting to a new one, SoCal ROC provides programs and hands-on training to support you in reaching your career goals.

**SOCAL
ROC**

SOUTHERN CALIFORNIA
REGIONAL
OCCUPATIONAL
CENTER



2300 Crenshaw Blvd, Torrance Ca 90501

About Us!

SoCal ROC is part of the California public school system that provides Career Technical Education (CTE) opportunities for high school and adult students. SoCal ROC offers more than 30 different courses, each part of a sequential pathway, approved by the California Department of Education.

Our CTE classes cover a wide range of fields, from construction trades to healthcare to creative media. By enrolling in CTE courses, you can gain hands-on experience, industry-recognized certifications, and a deeper understanding of your chosen field. All of our programs collaborate with local businesses and industry leaders, ensuring that the curriculum is aligned with current market needs and technological advancements. This connection not only makes you more competitive in the job market but also opens doors to externships, apprenticeships, and job placements. Additionally, our experienced instructors, who are seasoned professionals in the industry, are devoted to your success and are determined to assist you every step of the way.

Advance Your Career with Hands-on Learning

Investing in Career Technical Education is more than just a step towards a job — it's a commitment to your professional growth and lifelong learning.



REGISTRATION AND GENERAL INFORMATION

Registration

In-person registration for fall classes are now open. Registration is completed on a space available basis. Late registrations are accepted. Classes must have the required minimum number of student registrations as of the first class. Classes may be closed due to lack of enrollment. Course times and/or instructors may be subject to change based on course or program needs. To access course requirements and prerequisites please call registration at 310-224-4200 or email registration@scroc.k12.ca.us

How to Register

Adult and High School students register in-person at the Center in Torrance. Our registration office is located at 2300 Crenshaw Blvd, Torrance Ca 90501. For more information regarding the overall registration process, contact the registration office at (310) 224-4200 or contact us at registration@scroc.k12.ca.us. This tentative schedule as of 06/17/24 is distributed for information and registration purposes. SoCal ROC will provide updated schedules as needed.

Fees

Fees for all classes will be charged as noted. All fees are payable at time of registration. Please note students pay a fee per class that includes a non-refundable registration fee of \$25 and books and supplies are not included in the class fee.

Financial Support

Interested in Advancing Your Career but not sure if you can afford it financially. Here at SoCal ROC we completely understand and provide several different options for tuition assistance. Along with partnering with agencies such as the Department of Rehabilitation, South Bay Workforce Investment Board, and CA Employment Development Department we also offer we also offer tuition assistance, up to 5% through our fee waiver program to those who qualify. In addition, adult students can sign up for the SoCal ROC Reimbursement Program an initiative of the US Department of Labor - Employment and Training Administration (ETA). For additional information visit www.socalroc.com/reports-and-policies/adult-division/financial-support

High School Information

SoCal ROC offers CTE courses to high school students regardless of geographic residence. High School students can earn elective credit and some courses are A-G approved. Grades and credits will be awarded from SoCal ROC at the completion of the course session. Call 310-224-4200 to find out if your child resides in a partner district and can attend our industry training program for FREE.

Uniform Complaint Procedure

Southern California Regional Occupational Center is committed to upholding the rights of all school stakeholders to access the benefits of public education in a supportive, equitable and caring environment. Should you have concerns about any type of misconduct, harassment, bullying, or non-compliance with Board policies or State or Federal laws, you may file a formal complaint by using the Center's Consolidated Complaint Form found on our website or the registration office.

Accreditation

The Southern California Regional Occupational Center is accredited by the Western Association of Schools and Colleges (WASC) for secondary academic programs.



Refund Policy

Before you register, please be aware that there is a \$25.00 non-refundable registration fee on all refund requests, even if you have never attended a class session. After attending one or more class sessions no refunds will be granted.

KEEP YOUR RECEIPT IN A SAFE PLACE

No refund will be granted without the original receipt. You have up to two weeks from the first day of class to request a refund providing you have not attended after the first class meeting. The administrative fee for a live scan may be refunded providing the live scan has not been completed.

Please note; \$25 processing fee for returned check

MISSION AND VISION STATEMENT

Mission Statement

The mission of SoCal ROC is to provide all students through industry-linked programs, the skills and knowledge necessary to attain their career goals in order to become economically self-sufficient and be a successful contributor to society and a global economy.

Our belief system and foundation is focused on our Schoolwide Learning Outcomes (SLOs):

Students will develop and execute a multi-year career plan by:

- Understanding Career Pathways
- Identifying a career area of focus
- Enrolling in a course within a Career Pathway
- Demonstrating job specific skills/competencies necessary to attain a course certificate
- Developing job readiness skills
- Pursuing training to advance in a Career Pathway
- Demonstrating knowledge of future career options

Students will demonstrate professional behavior in the workplace by:

- Communicating effectively
- Demonstrating leadership qualities that contribute to the organization
- Effectively managing time
- Building relationships through collaboration and teamwork
- Thinking critically/solving problems
- Dressing appropriately for a career
- Demonstrating flexibility, resiliency, and perseverance

Students will anticipate and adjust to ongoing economic and workforce trends by:

- Demonstrating entrepreneurial characteristics
- Demonstrating technological literacy
- Being resourceful and innovative
- Using resources to acquire knowledge
- Setting priorities and adapting as priorities change
- Taking courses that are aligned with current industry standards

Students will understand and demonstrate ethical and legal behavior by:

- Understanding and complying with all school rules and workplace regulation
- Treating all people with respect
- Demonstrating appreciation for cultural diversity
- Demonstrating honesty and integrity
- Demonstrating responsibility and accountability in fulfilling community and workplace roles
- Demonstrating appropriate customer service skills

Our Vision

All students will have the opportunity to participate in a high-quality, rigorous, and relevant course of study made up of Career Technical Education (CTE) courses aligned to CTE Standards and academic standards. Courses shall be reviewed on an annual basis with industry partners so as to meet industry standards and expectations ensuring that skills and theory taught will prepare students for further study and preparation for high skilled, high wage, and technologically “green” focused career areas of today and tomorrow.

Design, Visual, and Media Arts Pathway

Animation

September 09, 2024 - January 29, 2025 (1 Semester)

In a world increasingly driven by digital media, students can benefit immensely from learning animation. This dynamic skill offers a unique blend of creativity and technical expertise that can set you apart in numerous fields. Animation not only allows you to express your creative visions but also equips you with valuable problem-solving skills and a keen understanding of technology.

(In-person)

#656 | Intro to 3D Modeling and Animation | M/W | 4:15pm - 7:00pm | \$700

#658 | 3D Character Design and Animation | M/W | 4:15pm - 7:00pm | \$700

#659 | Advanced Character Design and Animation | M/W | 4:15pm - 7:00pm | \$700



Graphic Design

September 9/10, 2024 - January 28/29, 2025 (1 Semester)

Are you passionate about creativity and visual storytelling? Enrolling in Graphic Design courses might be the perfect next step for you! Our Graphic Design CTE courses offer hands-on learning experiences that are both engaging and practical. You'll get to work with industry-standard software like Adobe Photoshop and Illustrator, ensuring you're well-prepared for real-world projects. Not only will you learn the technical skills, but you'll also develop a keen eye for aesthetics and design principles. This comprehensive approach prepares you for a variety of career paths, from branding and advertising to web design and multimedia production.

(Hybrid)

#248 | Media Design I (Photoshop) | M/W | 4:15pm - 7:00pm | \$800

#247 | Media Design II (Illustrator) | T/Th | 4:15pm - 7:00pm | \$800



Game Design and Integration Pathway

Game Design

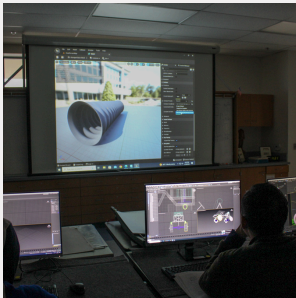
September 10, 2024 - January 28, 2025 (1 Semester)

Our 3D Game Design courses open up a thrilling world where creativity meets technology, offering a gateway into the dynamic and ever-evolving gaming industry. This pathway is tailored for those who are passionate about video games and eager to transform their imaginative ideas into a digital experience. It's not just about playing games; it's about understanding the intricate mechanics behind them, the storytelling, the art, and the technology that brings them to life.

(In-person)

#634 | Intro to 3D Game Design | T/Th | 4:15pm - 7:00pm | \$700

#637 | 3D Game Design: Special Effects and Reels | T/Th | 4:15pm - 7:00pm | \$700



Fashion Design and Merchandising Pathway

Fashion Design

September 9, 2024 - January 29, 2025 (1 Semester)

Our Fashion Design CTE courses offer an incredible opportunity to unleash your creativity and transform your passion for fashion into a practical career. You will have access to industry-standard equipment and develop an in-depth understanding of the entire fashion design process, including fashion trends, clothing construction, terminology, production, marketing, and much more. All students will produce and display their own clothing line at the SoCal ROC Fashion Show!

(In-person)

#632 | Fashion Design | M-Th | 4:15pm - 7:00pm | \$1,100

#631 | Fashion Design Production | M-Th | 4:15pm - 7:00pm | \$1,100



SCHOOL OF ENGINEERING AND DESIGN

Welding and Materials Joining Pathway

Welding

September 9, 2024 - November 07, 2024 or November 12, 2024 - January 29, 2024 (8 weeks)
September 9/10, 2024 - January 28/29, 2025 (1 Semester)

SoCal ROC's Welding program consists of four modules and prepares you for an in-demand, lucrative career in the welding industry. We offer the flexibility and industry training you need to jumpstart your career and to prepare for the L.A. City 3G and 4G structural exam.

(In-person)

#523 | Welding I | M - Th | 8:45am - 11:45am or 1:15pm - 4:15pm or 4:15pm - 7:00pm | \$1,200 (8 wks)

#2523 | Welding II | M-Th | 8:45am - 11:45am or 1:15pm - 4:15pm or 4:15pm - 7:00pm | \$1,200 (8 wks)

#3523 | Welding III | M-Th | 8:45am - 11:45am or 1:15pm - 4:15pm or 4:15pm - 7:00pm | \$1,200 (8 wks)

#4523 | Welding IV | M-Th | 8:45am - 11:45am or 1:15pm - 4:15pm or 4:15pm - 7:00pm | \$1,200 (8 wks)

***Welding I/II/III/IV | M/W or T/Th | 7:00pm - 9:45pm | \$1,200 (1 semester)**

*refer to desired module for course number



Mechanical Systems Installation and Repair

Heating, Ventilation, Air Conditioning (HVAC)

September 9/10, 2024 - January 28/29, 2025 (1 Semester)

SoCal ROC's HVAC program consists of two modules where you will learn how to install, operate, and repair heating and air conditioning systems through project-based experiences and hands-on training in residential and commercial ventilation.

(In-person)

#1508 | HVAC I | T/Th | 4:15pm - 7:00pm | \$900

#1508 | HVAC I | T/Th | 7:00pm - 9:45pm | \$900

#2508 | HVAC II | M/W | 4:15pm - 7:00pm | \$900

#2508 | HVAC II | M/W | 7:00pm - 9:45pm | \$900



Residential and Commercial Construction

General Electrician



September 9, 2024 - January 29, 2025

The skills you will learn are in high-demand and can be applied in all areas of electrical installation. Our General Electrician program is state approved and is a 2 semester program. Upon completion of the entire program students will be eligible to obtain an Electrical Trainee Card (ET Card) and receive education credit hours. Electrical trainees are not the same as apprentices. The difference between an apprentice and a trainee is that an apprenticeship program may last between three to four years. An electrical trainee can register for an ET card, and then can work full or part-time on the job supervised under a licensed electrician.

(In-person)

#1519 | General Electrician Modules I-III | M-Th | 9:45am - 3:45pm | \$4,050

Plumbing



September 10, 2024 - June 12, 2025 (2 Semesters)

SoCal ROC's two semester Plumbing program teaches practical skills and prepares students for real-world scenarios using modern tools. The skills you will learn are in high-demand and can be applied in all areas of residential and commercial plumbing. Our plumbing program prepares high school and adult students for the journeyman test and to excel in a lucrative industry. Covers nomenclature, basic equipment and tools, pipe fitting techniques, water and drainage systems, blueprint reading and related maintenance, and repair techniques.

(In-person)

#574 | Plumbing | T/Th | 4:15pm - 7:00pm | \$1,200

Systems, Diagnostics, Service, and Repair

Automotive



September 9, 2024 - January 29, 2025 (1 Semester)

Jumpstart your career in the Automotive Repair Industry! Our program is structured with four Automotive modules and two engine performance modules, each designed to align with Automotive Service Excellence (ASE) certifications. SoCal ROC has formed a partnership with Honda and Ford, offering students a competitive edge through the opportunity to earn certifications and specific training from both brands.

(In-person)

#559 | Automotive I | M - Th | 1:15pm - 4:15pm or 4:15pm - 7:00pm | \$1,300

#2559 | Automotive II | M - Th | 1:15pm - 4:15pm or 4:15pm - 7:00pm | \$1,300

#3559 | Automotive III | M - Th | 1:15pm - 4:15pm or 4:15pm - 7:00pm | \$1,300

#4559 | Automotive IV | M-Th | 1:15pm - 4:15pm or 4:15pm - 7:00pm | \$1,300

#551 | Engine Performance | M-Th | 7:00pm - 9:45pm | \$1,300

Patient Care

Physical Therapy Aide

September 9, 2024 - January 29, 2025 (1 Semester)



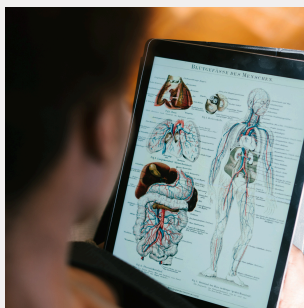
In our Physical Therapy Aide course you will learn about anatomy, patient care, and therapeutic techniques, which are valuable in various healthcare settings. This foundation can serve as a stepping stone for further studies in physical therapy or other healthcare professions. By enrolling in this CTE course, you will gain a head start in a field that is not only in high demand but also offers the opportunity to make a meaningful, positive impact on people's lives.

(Hybrid)

#670 | Physical Therapy Aide | M-Th | 4:15pm - 7:00pm | \$1,000

Anatomy and Medical Terminology

September 10, 2024 - January 28, 2025 (1 Semester)



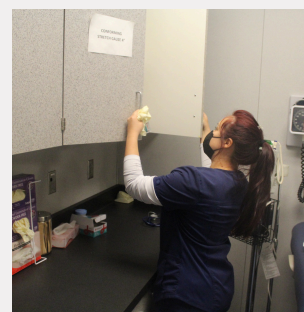
Develop a fluency and gain confidence in the highly specialized language of health. Our Anatomy and Medical Terminology course prepares you to analyze, define, pronounce, and comprehend medical language. The subject matter covered in this course can be applied across all fields of healthcare and can help separate you from the saturated pool of students seeking admissions into medical programs.

(Hybrid)

#493 | Anatomy and Medical Terminology | T/Th | 4:15pm - 7:00pm | \$900

Certified Medical Assistant

September 9, 2024 - June 12 (2 Semesters)



Our Certified Medical Assisting program is designed to prepare you to sit for the AAMA National Certification Exam to become a Certified Medical Assistant (AAMA) and to jumpstart your medical career. You will also complete a 160 hour unpaid externship.

(In-person)

#424 | Certified Medical Assistant | M-Th | 8:00am - 3:00pm | \$5,500



Dental Assisting

September 9, 2024 - January 29, 2025 (1 Semester)

This course provides entry-level extensive hands-on training in the unlicensed field of Dental Assisting. This program is designed for adults with no prior experience who want to serve as entry-level Dental Assistant while working to become eligible to sit for the RDA exam.

(In-person)

#410 | Dental Assisting (Adults Only) | M- Th | 4:15pm - 7:00pm | \$1700

#410 | Dental Assisting (Adults Only) | M- Th | 7:00pm - 9:45pm | \$1700



Registered Dental Assisting

September 9, 2024 - June 12 (2 Semesters)

Students will be trained and licensed in taking dental x-rays and certified in Coronal Polishing, Infection Control, Pit & Fissure Sealants, California Dental Practice Act and HIPAA.

Upon completion of the program, students will be eligible to take the California State Board Examination for licensure as a Registered Dental Assistant (RDA). The program includes a 160-hour externship.

(In-person)

#412 | Registered Dental Assisting | M- Th | 8:00am - 3:00pm | \$5,100 (Externship Included)



Sterile Processing Distribution Technician

September 9, 2024 - January 9, 2025 (1 Semester)

The SPDT program prepares you for an exciting career in Sterile Processing Distribution. Following the COVID-19 pandemic, healthcare facilities have placed an increase emphasis on sterilization and avoiding cross-contamination, which has led to a high-demand for qualified SPD technicians.

This field requires no prior experience and acts as a great introduction to the healthcare field. SPDT positions work at all hours of the day and offer a flexible schedule in a full-time, part-time, per diem, or traveling role. Preceding successful completion of the course students will participate in a 10 week externship.

(Hybrid)

#429 | SPD Technician | Monday - Thursday | 4:15pm - 7:00pm | \$3,000

Emergency Care Pathway

Emergency Medical Technician

September 9/10, 2024 - January 28/29, 2025 (1 Semester)

Embark on your journey to a new career by enrolling in our Emergency Medical Technician program. This course will prepare you for the National Registry Exam (NREMT) and will cover essential medical skills and knowledge that can pave the way for future healthcare roles. For students not quite ready to jump into the official EMT program, we offer an Emergency Medical/First Responder course for adults who wish to take an introductory course before enrolling in our EMT program.

(In-person)

#405 | Emergency Medical/First Responder | M/W | 4:15pm - 7:00pm | \$800

#1405 | Emergency Medical/First Responder | T/Th | 4:15pm - 7:00pm | \$800

#409 | Emergency Medical Technician | M - Th | 7:00pm - 9:45pm | \$1,300 (Externship Included)



Health Care Administrative Services Pathway



Health Unit Coordinator/ EKG Monitor Technician

September 10, 2024 - January 28, 2025 (1 Semester)

The Health Unit Coordinator/EKG Monitor Technician program is a great opportunity to jumpstart your career in the medical field! This course prepares you for a variety of healthcare roles, including unit secretary and cardiac monitor technician in hospitals and clerical staff in physicians' offices, outpatient surgical units and nursing homes.

(Hybrid)

#483 | Health Unit Coordinator/EKG Monitor Tech | T/Th | 7:00pm - 9:45pm | \$1,100 (Externship Included)



Medical Front Office

September 9, 2024 - January 29, 2025 (1 Semester)

This one semester course is designed to prepare you to obtain an entry-level position in the front office of a doctor's office or medical clinic. You will learn administrative office skills including: receptionist duties, telephone techniques, appointment scheduling, introduction to insurance claims processing, financial management of the office, written communications, and medical terminology and abbreviations.

(Hybrid)

#414 | Medical Front Office | M/W | 4:15pm - 7:00pm | \$900

Animal Science Pathway



Pet Health and Grooming

September 9/10, 2024 - January 28/29, 2025 (1 Semester)

Do you love working with animals and would like to turn that love into a career? Pet grooming is a fast growing and in-demand field that can lead to self-employment! You will learn to perform animal grooming duties such as washing, brushing, clipping and trimming coats, cutting nails, and cleaning ears. This course also covers how to interpret animal behavior and identify grooming needs on live dogs!

(In-person)

#273 | Pet Health and Grooming | M/W | 4:15pm - 7:00pm | \$800
#274 | Advanced Pet Health and Grooming | T/Th | 4:15pm - 7:00pm | \$800



Veterinary Assistant

September 9, 2024 - January 29, 2025 (1 Semester)

Our Veterinary Assistant course is an introductory course designed to act as a starting point for students interested in pursuing a career working with animals as an animal trainer, veterinarian, zookeeper and so much more! Upon successful completion of this course, you will be qualified for Veterinary Assistant positions and have fundamental knowledge to further your course of study at SoCal ROC through our Veterinary Science course!

(In-person)

#223 | Veterinary Assistant | M - Th | 4:15pm - 7:00pm | \$1,250



Veterinary Science

September 9, 2024 - January 29, 2025 (1 Semester)

Our Veterinary Science course is an advanced level course that is taken after completing our Veterinary Assistant course. This course will offer you the opportunity to acquire advanced animal principles and prepare you for advanced post-secondary level education in animal science, biology, and/or zoology by providing a sound platform for you to master the knowledge and skills needed to pursue a rewarding career as part of the veterinary professional team dedicated to providing the best animal and public health care available.

(In-person)

#322 | Veterinary Science | M - Th | 7:00pm - 9:45pm | \$1,250

SCHOOL OF PUBLIC AND CONSUMER SERVICES

Personal Services



Barbering

September 9, 2024 - June 12, 2025 (2 Semester)

Our Barbering course is made up of two semesters and prepares you to complete the 1,000 hours of training necessary to take the California State Board Barbering Examination. In a barber shop environment, you will receive personal attention and instruction from industry professionals at a fraction of the cost of other schools.

(In-person)

#354 | Barbering | M-Th | 8:00am- 5:00pm | \$5,900



Cosmetology

September 9, 2024 - June 12, 2025 (2 Semester)

September 9 - January 29, 2025 (1 of 3 Semesters)

Our Cosmetology program provides you the opportunity to complete the 1,000 theoretical and practical hours of training required for certification, and pass the California Board of Barbering and Cosmetology examination.

(In-person)

#432 | Cosmetology | M-Th | 8:00am - 5:00pm | \$5,520

#432 | Cosmetology A | M-Th | 4:00pm - 9:45pm | \$1,840

LAHC DUAL ENROLLMENT



Counsel 04 - Career Planning

September 11, 2024 - December 18, 2024

Counsel 004 is a great opportunity for you to take an in-depth look into your career path. The course includes vocational interest tests, various self-appraisal techniques, and information regarding occupational characteristics, trends, entry level, and career ladder roles.

(In-person)

#139 | Counsel 04 - Career Planning | W | 4:15pm - 5:30pm | 1 unit of college credit | \$46



Counsel 17 - College Survival Skills

September 11, 2024 - December 18, 2024

Counsel 17 provides you with a variety of survival skills necessary to be a successful college student. Course includes instruction in using the library, study skills, time management, effective communication, self-esteem, stress management, and developing a healthy lifestyle.

(In-person)

#140 | Counsel 17 - College Survival Skills | W | 5:45pm - 7:00pm | \$46

SOCAL
ROC

SOUTHERN CALIFORNIA

REGIONAL
OCCUPATIONAL
CENTER



*2300 Crenshaw Blvd,
Torrance CA, 90501*



SoCalROC_CTE



SoCalROC



SoCalROC



www.socalroc.com